

# PROACT.®

**REFERENCE :** PA469

**SIZES :** XS\_S\_M\_L\_XL\_XXL

**COMPOSITION :**

Main fabric : Polyester birdseye - 160 100%polyester

**WEIGHT :**

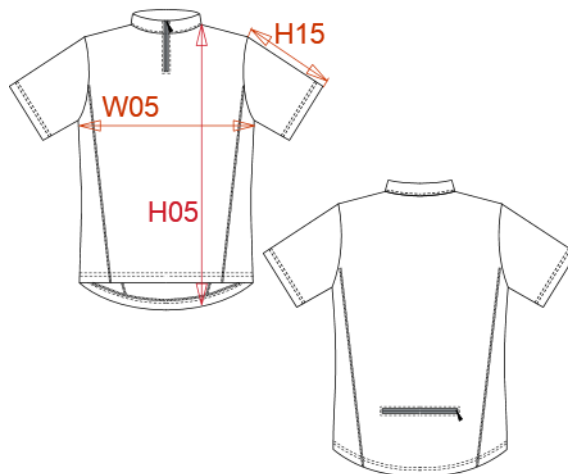
Main fabric : 160 gsm

**TECHNICAL DETAIL :**

Quick dry fabric

**ARTICLE WEIGHT :**

180gr/pc



DESCRIPTION
<b>Français :</b> T-shirt cycliste femme
<b>English :</b> Ladies' bike T-shirt
<b>Nederlands :</b> Dames biking sportshirt
<b>Deutsch :</b> Radler damen T-shirt
<b>Español :</b> Camiseta ciclista para mujer
<b>Italiano :</b> T-shirt donna bike
<b>Português :</b> T-shirt de senhora de ciclismo

COLORS	PANTONE SERIGRAPHIE
White	White

MEASUREMENT							
Description	XS	S	M	L	XL	XXL	
<b>W05 (L)</b> 1/2 largeur poitrine à 1.5cm de l'emmanchure / 1/2 chest width at 1.5cm below armhole	41	44	47	50	53	56	

CARE LABEL				

PACKING	
Box	50 pcs / box XS => L:48cm W:35cm H:26cm GW:5.60kg NW:3.90kg S => L:48cm W:35cm H:26cm GW:6.00kg NW:4.30kg M => L:50cm W:36cm H:26cm GW:6.20kg NW:4.50kg L => L:50cm W:36cm H:26cm GW:6.40kg NW:4.70kg XL => L:55cm W:39cm H:26cm GW:6.60kg NW:4.90kg XXL => L:55cm W:39cm H:26cm GW:6.90kg NW:5.20kg