



NS612

Veste col sherpa unisexe



100% coton biologique Unisexe Coton Twill Patch de personnalisation intérieur col Produit lavé 2 poches devant Zip en métal recyclé Extérieur du col et doublure du corps en Sherpa polyester recyclé Bord côte 1*1 bas de vêtement et bas de manche

 380 g/m² 

Tailles

 XXSXSMLXLXXL3XL

Informations Complémentaires


Logistique

 1  10

Pays d'origine

 BD - Bangladesh

Code douanier

 62023090

Conditions de lavage



Couleurs

 Wet Sand

Certifications



Made with 55% Organic materials. Certified by EcoCert Greenfile. EGL N°183963 / TOPTEX Belgique

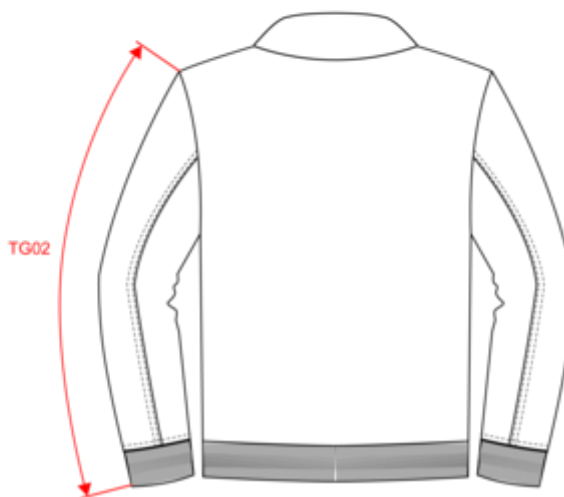
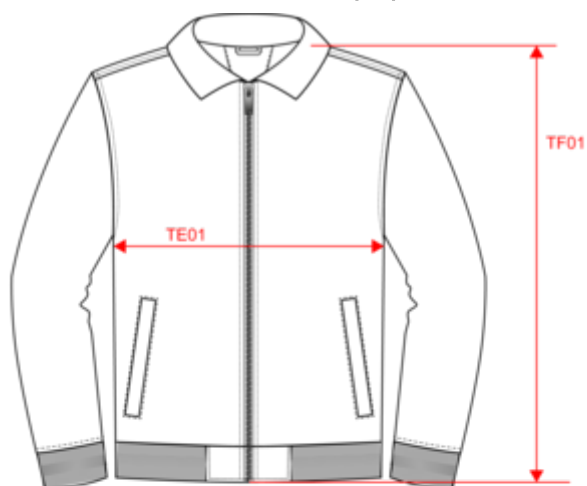
Made with 55% Organic materials. Certified by EcoCert Greenfile. EGL N°183960 / TOPTEX France

Made with 48% recycled materials. Certified by EcoCert Greenfile. EGL N°183963 / TOPTEX Belgique


Made with 48% recycled materials. Certified by EcoCert Greenfile. EGL N°183960 / TOPTEX France

NS612
Veste col sherpa unisex

Dimensions (cm)



Mesures en cm	XS	S	M	L	XL	XXL	3XL
TE01 - 1/2 largeur poitrine à 1.5cm de l'emmanchure	52.00	55.00	58.00	61.00	64.00	67.00	70.00
TF01 - Hauteur totale de l'HSP	66.00	68.00	70.00	72.00	74.00	76.00	78.00
TG02 - Longueur manche longue	65.00	66.00	67.00	68.00	69.00	70.00	71.00

Informations Couleurs

Wet Sand

RVB : 164,146,128
Pantone C : 7536C
Pantone TCX : 17-1312TCX

Logistique



1



10

Sizes	Width (cm)	Height (cm)	Length (cm)	Net weight (kg)	Gross weight (kg)	Pieces/Box	Pieces/Bundle
XS	40.00	41.00	60.00	12.50000	11.00000	10	1
S	40.00	41.00	60.00	13.00000	11.50000	10	1
M	40.00	41.00	60.00	13.50000	12.00000	10	1
L	40.00	41.00	60.00	14.50000	13.00000	10	1
XL	40.00	41.00	60.00	15.50000	14.00000	10	1
XXL	40.00	41.00	60.00	16.50000	15.00000	10	1
3XL	40.00	41.00	60.00	17.50000	16.00000	10	1